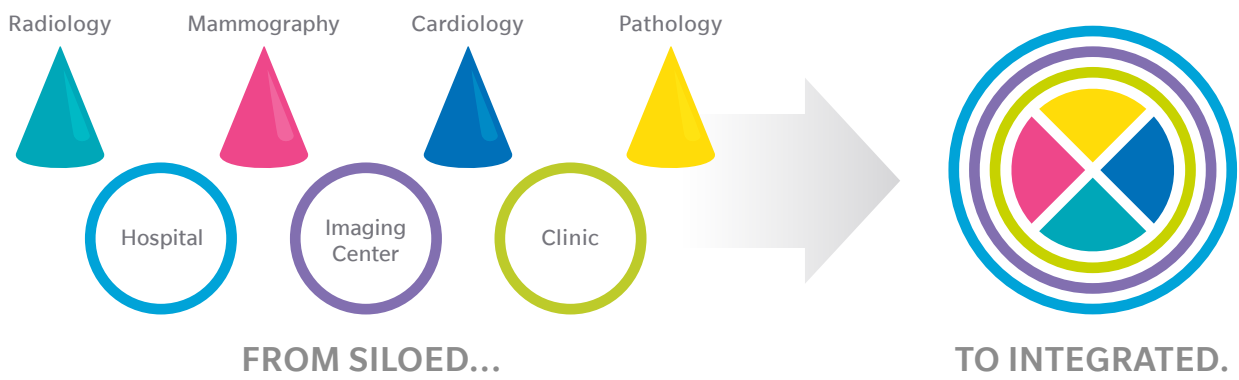


exa™

# ENTERPRISE IMAGING

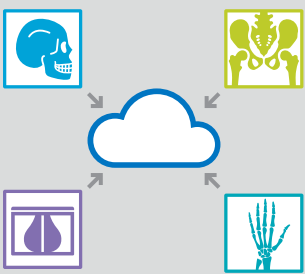
## Better decisions, sooner.

THE WAY TODAY'S HEALTHCARE ORGANIZATIONS MANAGE AND VIEW IMAGES **HAS CHANGED DRAMATICALLY.**



**THAT REQUIRES AN ENTERPRISE-WIDE APPROACH.** HEALTHCARE ORGANIZATIONS NEED:

### Image integration with EHR



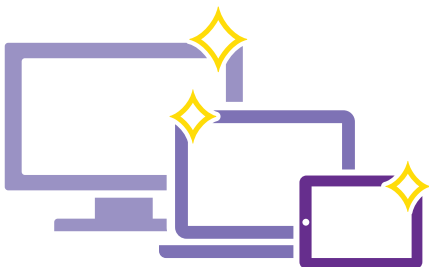
- The ability to view DICOM and non-DICOM images
- Ease and speed of access
- Accessibility of diagnostic imaging

Plus recent breaches underline the need for heightened security.



## THE ANSWER: EXA™ ENTERPRISE IMAGING

### Diagnostic Zero Footprint Universal Viewer



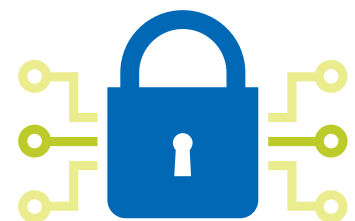
- Full diagnostic toolsets and viewing capabilities from any device\*
- No downloads or installations necessary

### Server-Side Rendering



- Fast access to large files, such as 3D Mammography
- No prefetching required

### Cybersecurity



- No data transferred to or stored on workstations
- Minimize unwanted exposure to patient data

WHEREVER YOU ARE ON YOUR JOURNEY TO AN ENTERPRISE-WIDE SOLUTION, **KONICA MINOLTA CAN HELP YOU.**



### Centralized Archive and Image Exchange

Protect investments in current systems and workflows.



### Consolidated Workflow and Viewing

Standardize and integrate across specialties.



### Specialty Viewing

View large files—anywhere, from any device.\*



### Image Enable the EHR

View DICOM and non-DICOM images across all departments.

**Learn more about Exa Enterprise Imaging.**

[konicaminolta.com/medicalusa/exa-platform](http://konicaminolta.com/medicalusa/exa-platform)

\*Mammography images should only be viewed with a monitor approved by FDA for viewing mammographic images. For primary diagnosis, post process DICOM "for presentation" images must be used.